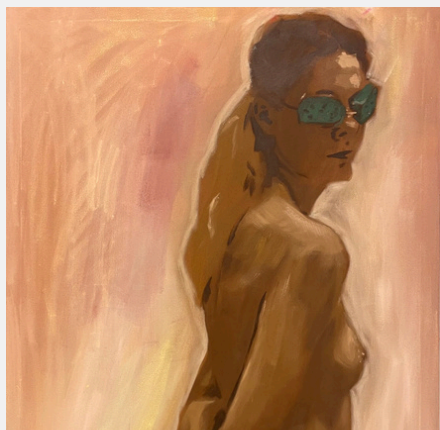


RIGA CONTEMPORARY
2026

ARTROVERT

GALLERY



GERDA HANSEN | MARLEEN SUVI

ARTROVERT.EE

GERDA HANSEN



Gerda Hansen (b. 1994) creates paintings that invite viewers to slow down and look twice. At first glance, her works appear calm and familiar—birds, flowers, landscapes, fragments of nature. But the longer you look, the stranger they become. Forms shift between the recognizable and the imagined, creating a sense of curiosity, wonder, and quiet uncertainty.

Hansen is fascinated by how we look at images and how easily our minds try to make sense of what we see.

Hansen received her Bachelor's degree in Painting in 2022 and her Master's degree in Contemporary Art in 2025 from the Estonian Academy of Arts. Her works have been exhibited in Estonia, Lithuania, Italy, and Sweden. In 2023, she was awarded the Adamson-Eric Young Artist Scholarship.

Her paintings often begin with her personal archive of AI-generated images, which she has collected over the years, then carefully translated into a painting that as a result sits somewhere in-between the real and the imagined.

Her image generation process is image-to-image rather than text-to-image. She uses platforms that allow users to combine and transform existing images within the platform, an evolving pool of images built collectively by its users over time. Because of this, there is usually no singular original image behind a painting, they are already the result of multiple combinations and transformations.

By bringing together digital tools and traditional painting techniques, she creates works that feel both familiar and impossible at the same time. Fueled by curiosity and the new possibilities, she has been embracing generative image models since before the release of ChatGPT.

Rather than offering clear answers, Hansen leaves space for interpretation.

Her paintings ask simple but increasingly relevant questions: What do we trust as real? How do images shape our understanding of the world?

GERDA HANSEN

RIGA CONTEMPORARY 2026



KEEPING WATCH

oil and acrylic on linen
100 x 80 cm, 2026

3000 euro



IN MOTION

oil and acrylic on linen
100 x 80 cm, 2026

3000 euro



IN BALANCE

oil and acrylic on linen
150 x 120 cm, 2026

4500 euro



ON AN EXPEDITION

oil and acrylic on linen
150 x 120 cm, 2026

4500 euro

GERDA HANSEN

RIGA CONTEMPORARY 2026



GATHERING

oil and acrylic on linen
100 x 80 cm, 2025

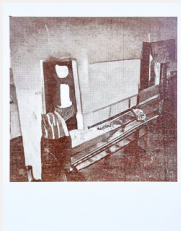
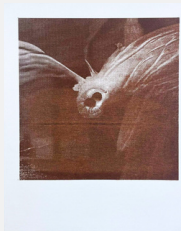
3000 euro



EVENING

oil, acrylic, spray on linen
150 x 120 cm, 2025

4500 euro



MEMORY

silkscreen on canvas, 1/1 tpl'a
42 x 35 cm, 2024

450 euro a piece

MARLEEN SUVI



Marleen Suvi's (b. 1998) latest works explore the feeling of trying to hold onto something elusive — a dream, a memory or a fragment of yourself that disappears the moment you make an effort to look directly at it.

Her works often begin with personal experiences, yet they touch on something widely familiar, tapping into a mysterious collective memory. Through self-portraits and emotionally charged imagery, Suvi examines questions of identity, desire, and self-perception.

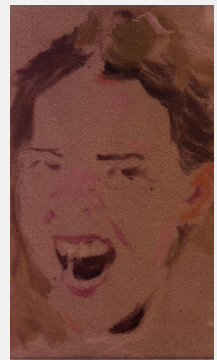
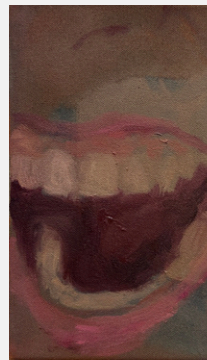
She holds a Master's degree in Contemporary Art (2023) and a Bachelor's degree in Painting (2020) from the Estonian Academy of Arts.

Marleen Suvi is a laureate of the Helju Rossmann Schneider Scholarship.

In her recent work, Suvi turns to recurring dreams, drawn less to what they mean than to how they feel and take shape. Her paintings inhabit a space where dreams become a reality of their own—intimate, vague and strangely familiar.

Through emotionally driven and materially experimental painting, she explores longing, memory, and the blurred boundaries between inner experience and lived reality.

Despite living in an age that seeks to measure, optimize, and explain every aspect of human life, dreams remain one of our most intimate unknowns. Her paintings linger in the space between certainty and ambiguity, where emotions often feel more real than facts.



selection of paintings from the series:
good dogs and main basement

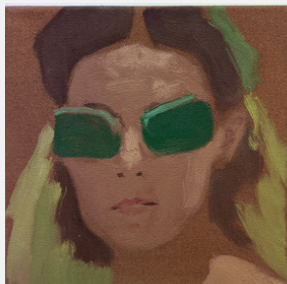
24 x 15 cm, oil on canvas, 2026

800 euro a piece

MARLEEN SUVI

RIGA CONTEMPORARY 2026

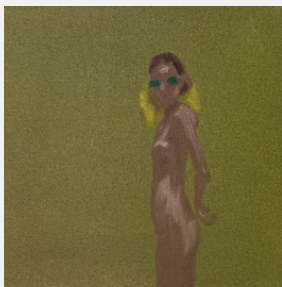
Paintings from the series: good dogs and main basement



1

24 x 24 cm, oil on canvas,
2026

800 euro



2

24 x 24 cm, oil on canvas,
2026

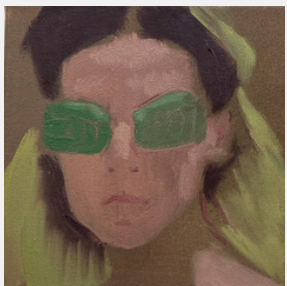
800 euro



3

24 x 24 cm, pigment on
canvas, 2026

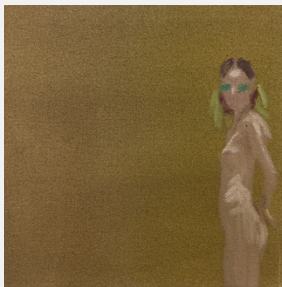
800 euro



4

24 x 24 cm, oil on canvas,
2026

800 euro



5

24 x 24 cm, oil on canvas,
2026

800 euro



6

24 x 24 cm, pigment on
canvas, 2026

800 euro



CERAMIC GLASSES

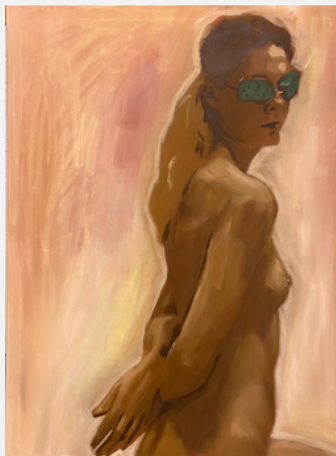
5 x 15 cm, glazed clay, leather 2026

390 euro

ARTROVERT.EE

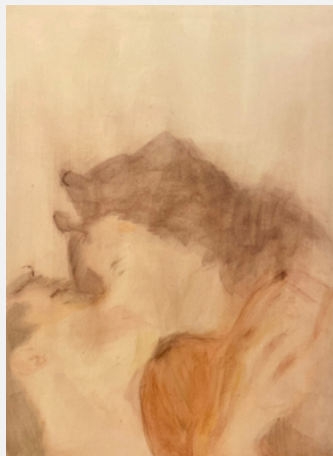
MARLEEN SUVI

RIGA CONTEMPORARY 2026



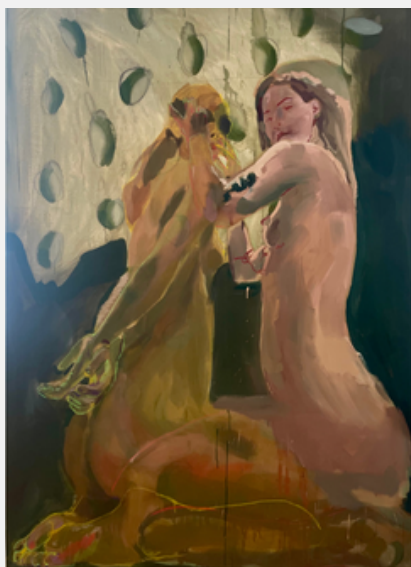
ONLY DIRT, THEN

135 x 100 cm
oil on canvas
2026
2900 euro



IMG_1773

135 x 100 cm
oil pastel, glitter on canvas
2025
2900 euro



I PRESS DREAMS TO FIT
INTO A SMALLER VESSEL
MY SOUL OVERFLOWS

200 x 140 cm
egg tempera, oil pastel, charcoal on
canvas
2026

4900 euro

LET'S KEEP IN TOUCH



ARTROVERT GALLERY

Artrovert Gallery was founded in 2022 and runs a 200 m² white-cube space with a regularly changing exhibition programme, as well as a 300 m² showroom presenting works by over 80 artists - from emerging to established.

Artrovert Gallery focuses on strong contemporary positions and bringing more visibility to artists connected to Estonia.



At Riga Contemporary 2026, Artrovert Gallery presents works by Gerda Hansen and Marleen Suvi. Both are talented painters with distinct way of expression on canvas, offering concepts of in-betweenness either in form or dreams.

Artrovert Gallery was founded by Siim Raie, whose approach is straightforward: build a programme that is clear, consistent, and artist-driven, while creating real connections between artists and audiences, both locally and internationally.

Thank you for visiting us.

Siim Raie, Gallerist and founder
Gertu Lepik von Wirén, Art advisor

ARTROVERT GALLERY
TALLINN, ESTONIA
@ARTROVERTGALERII



ARTROVERT.EE
GALERII@ARTROVERT.EE
+372 507 6807